



18 Old Oak Common Lane
Acton
London
W3 7EL
T: 020 8749 9798
E: sales@churchillmathesons.com
www.churchillmathesons.com

Churchill & Mathesons

East Acton Lane, London, W3 7HB

Offers In The Region Of £1,900,000 Freehold



KEY FEATURES:

- 6 BEDROOMS
- SOUTH FACING GARDEN
- SUMMER HOUSE
- FULLY REFURBISHED
- PARKING FOR 2/3 CARS
- ELEGANT
- NEUTRAL

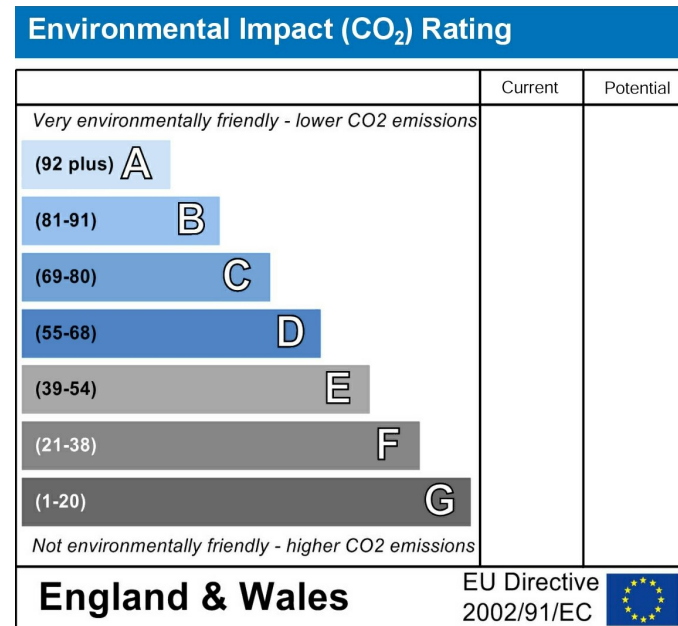
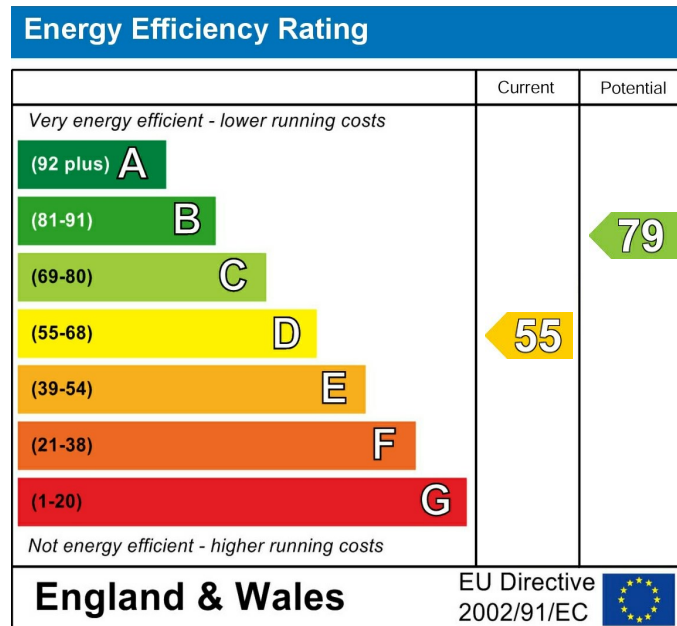
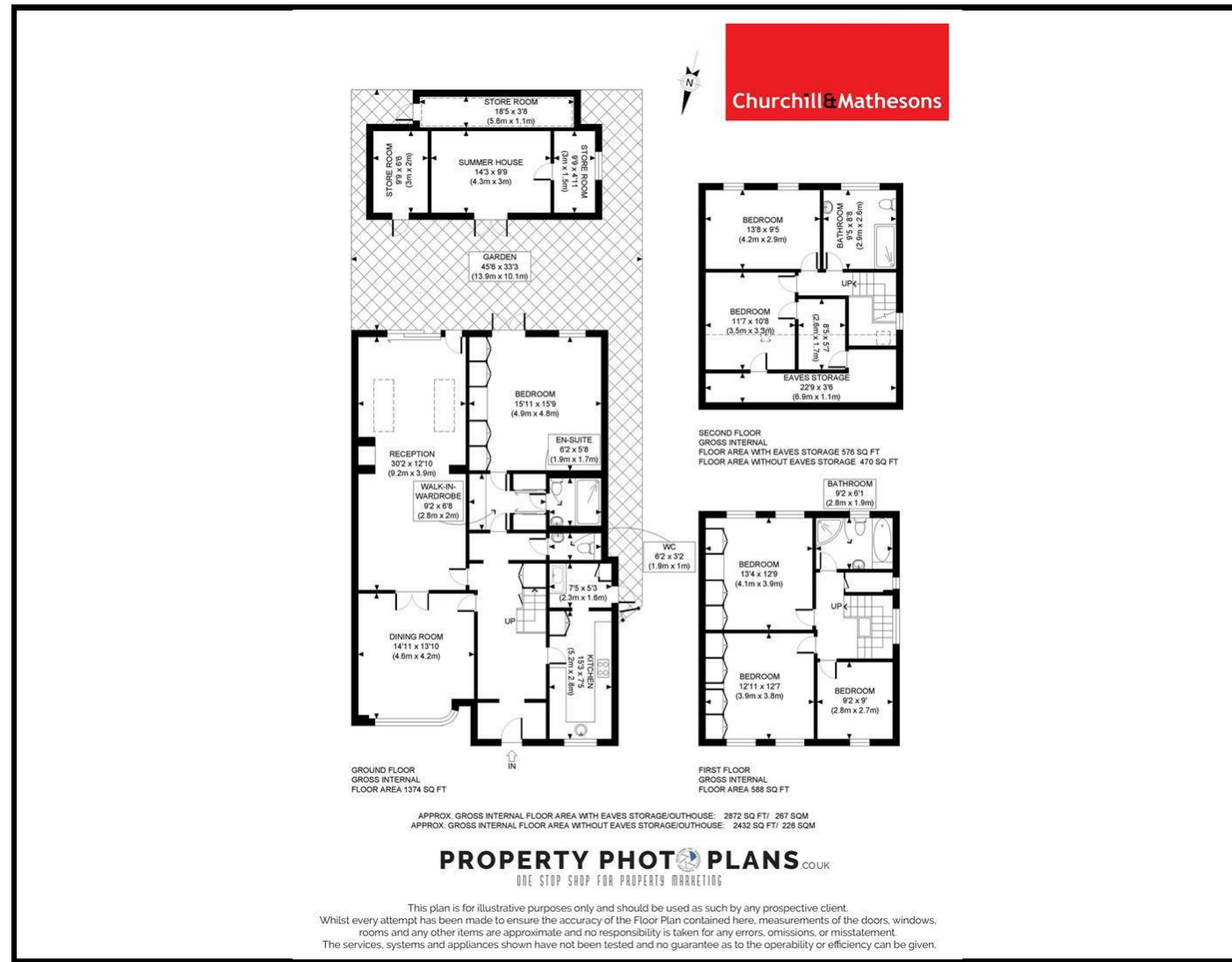
This IMPRESSIVE, 6-bedroom semi-detached house in West London, is set back from the main road & has 3 bathrooms, 2 reception rooms, SOUTH FACING garden & SUMMER HOUSE.

The ELEGANT property is refurbished to a high standard & neutral in design to allow for your own style. There is plenty of storage, WALK IN WARDROBE & an en-suite.

Situated in a vibrant West London location, Acton is a leafy London area with parks, shops & restaurants, whilst also convenient for transportation links. Acton Central - Zone 2 & the new Elizabeth line, the A40 gives easy access into central London & further west.

The property has a large driveway & parking for 2/3 cars. An internal viewing is highly recommended for this impressive family home. 2419sq ft/224sq meters of living accommodation

Local Authority London Borough of Ealing. Council Tax Band F.



Whilst every effort is made to give a fair description, the accuracy of these particulars is not guaranteed, neither do they constitute an offer or contract.

CHURCHILL & MATHESONS ESTATE AGENTS have not tested any apparatus, equipment, fitting or services and so cannot verify that they are in working order. The buyer is advised to obtain verification from their solicitor or surveyor. Measurements are correct to within +/-6 A sonic tape is used. None of the statements contained in these particulars or any of our properties are to be relied upon as a representation of fact.